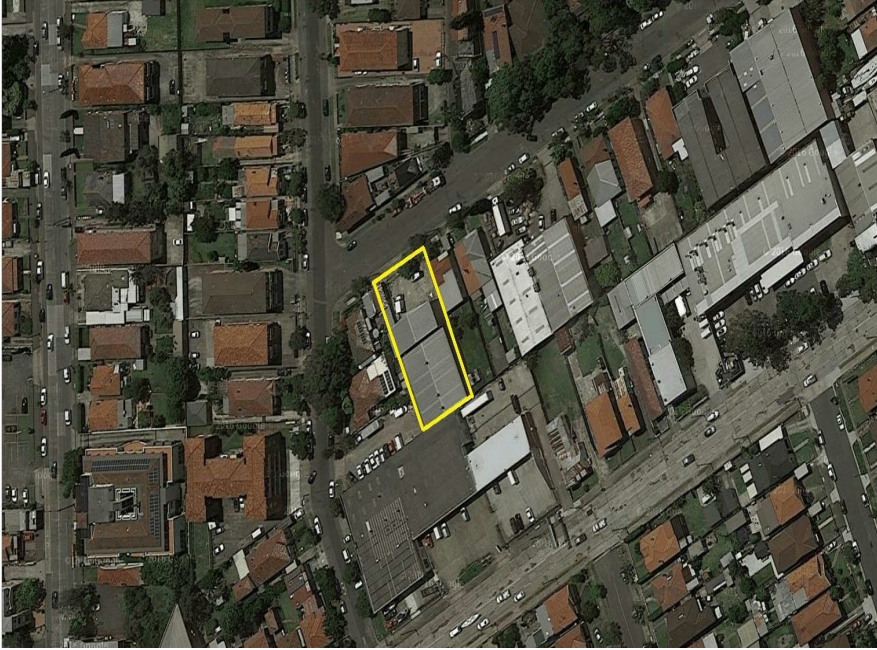


40-42 Perry St, Campsie, NSW 2194

Call Agent

Commercial Land



Commercial/Industrial

An excellent opportunity exists to purchase this property currently tenanted with future potential for redevelopment (Subject to Council approval).

- * Land dimensions 20m x 45m approx
- * Total land area 929m² approx
- * Great location only a short distance to all amenities

Details: George Vourlas 0412 074 222

Open for Inspection

By Appointment.

Listed By



George Vourlas
Phone: (02) 9789 2888
Mobile: 0412 074 222

