
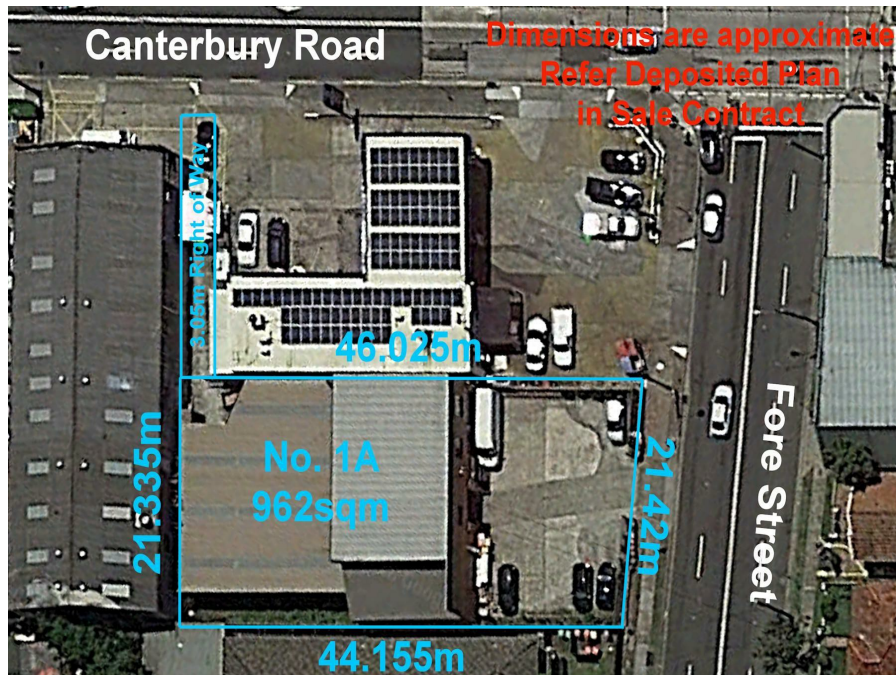


**1A Fore St, Canterbury, NSW 2193**

**Call Agent**

Commercial Land, Other 10 



## Commercial/Residential Development Site S.T.C.A

An excellent opportunity exists to purchase this warehouse currently tenanted with future potential for redevelopment (Subject to Council approval).

- \* B5 Zoning
  - \* 18m height
  - \* Total land area 962m2 approx
  - \* Great location only a short distance to station, schools and shops.
- Details: George Vourlas 0412 074 222

**Open for Inspection**

By Appointment.

### Listed By



George Vourlas  
Phone: (02) 9789 2888  
Mobile: 0412 074 222

